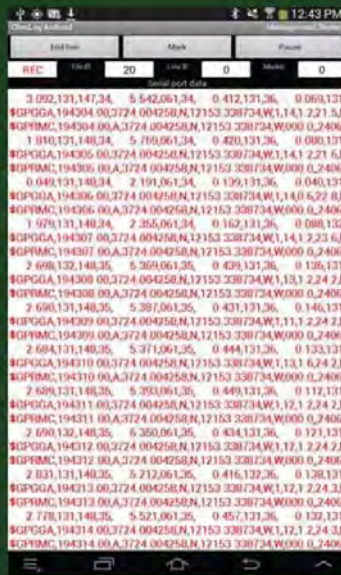
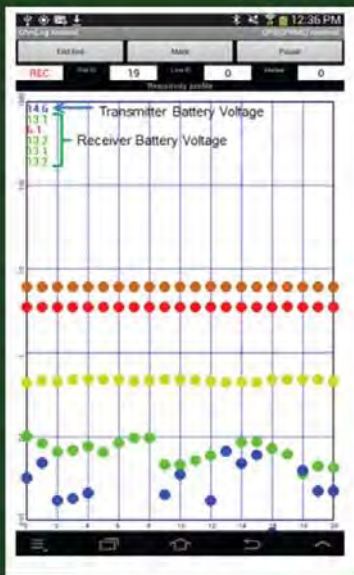


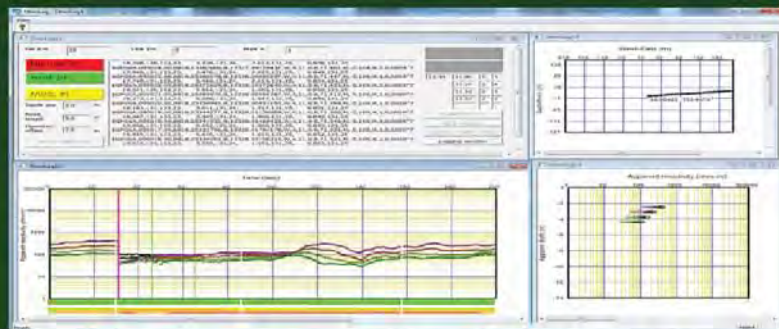
OhmMapper Real-Time Windows and Android Software for Data Logging and Processing

Log OhmMapper data to Android Device via Bluetooth connection



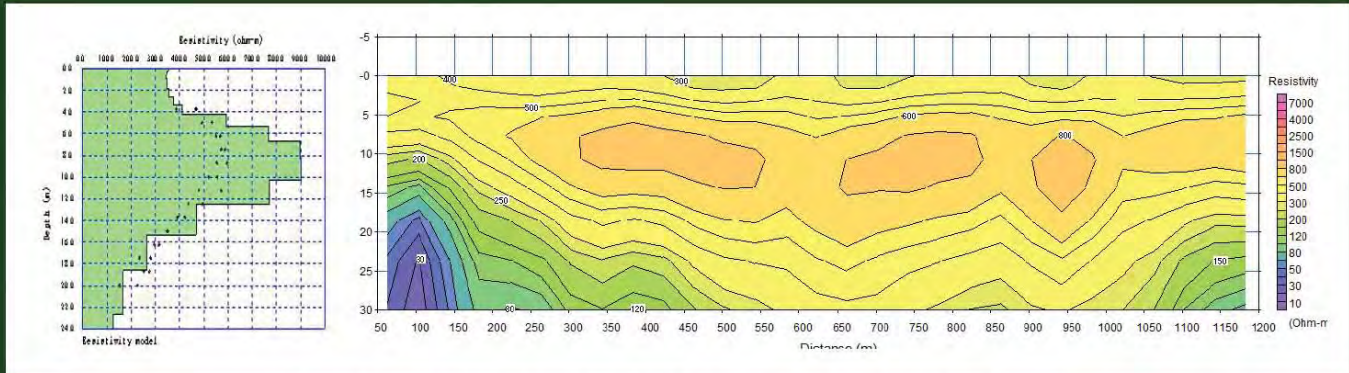
- Real time display of apparent resistivity data
- Monitor receiver and transmitter battery voltage to minimize system downtime
- Uses device's internal GPS to map surveys
- GPGGA and GPRMC provide ~1m accuracy in areas with SBAS coverage
- Mapped view shows survey positions
- Vector displays real time velocity and direction information

Log OhmMapper data to Windows PC via serial or USB cable



Real-time display of apparent resistivity, map position, and battery voltage. Uses external GPS device, ideal for applications needing RTK positioning.

OhmImager for Windows PC



1-D resistivity inversion and 2-D resistivity cross section maps.
Simple to use editing and processing software to analyze OhmMapper data.



Data logging box connected to serial cable
Can also be used with a Bluetooth Adaptor
to connect to an Android phone or tablet.



New OhmMapper Connector Protectors
Ideal for towing the OhmMapper over
rough surface conditions.