

ELREC Lite



Two channel hand held

Induced Polarization Receiver

FOR MINERAL EXPLORATION

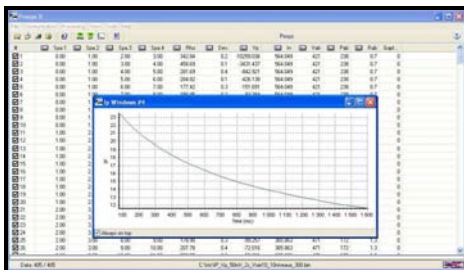
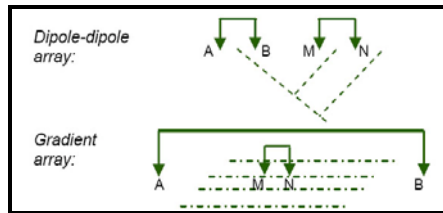
- 2 Simultaneous channels
- 20 Chargeability windows
- Low-weight, hand-held

MAIN FEATURES:

- The **ELREC Lite low-weight hand-held receiver** has been designed for high productivity surveys, with 2 simultaneous measurement channels
- Its **automatic synchronization process** let it work without any link with the transmitter
- The **Induced Polarization (IP) decay curve** is analyzed with 20 programmable windows for a higher definition of the IP chargeability waveform

TECHNICAL SPECIFICATIONS

- Two simultaneous channels
 - Twenty chargeability windows
 - Computation of apparent resistivity, average chargeability, standard deviation
 - Electrode arrays: dipole dipole, pole dipole, pole pole, Schlumberger, Wenner, gradient
 - Stacking process for signal enhancement
 - SP compensation with linear drift correction
 - Link to PC for data transfer
 - PROSYS II PC software for data filtering
 - Input impedance: 100 Mohm
 - Memory: 44 800 readings
 - Maximum input voltage: 15V
 - Chargeability accuracy: 0.6% typ
 - Time domain waveform, $T_{on} = 0.5, 1, 2, 4, 8s$
 - Programmable chargeability windows
 - Electrode ground resistance measurement
-
- Plastic weatherproof (IP 66) case
 - Rubber protection
 - Dimensions: 265 x 130 x 55 mm
 - Weight: 0.9 kg
 - Internal battery: Li-Ion 2.2 Ah
 - Heater external battery: 12V, 2Ah in a belt bag, for low temperature operation
 - Battery charger: 110/220 V, 50/60 Hz
 - Operating temperature range: -30°C to +50°C



PROSYS II software for data transfer, filtering, plotting and exporting to an interpretation software



Screen heater battery for low temperature operations

ELREC Lite G

Same specifications as ELREC Lite, except the screen which is graphic, with display of decay curve during acquisition

