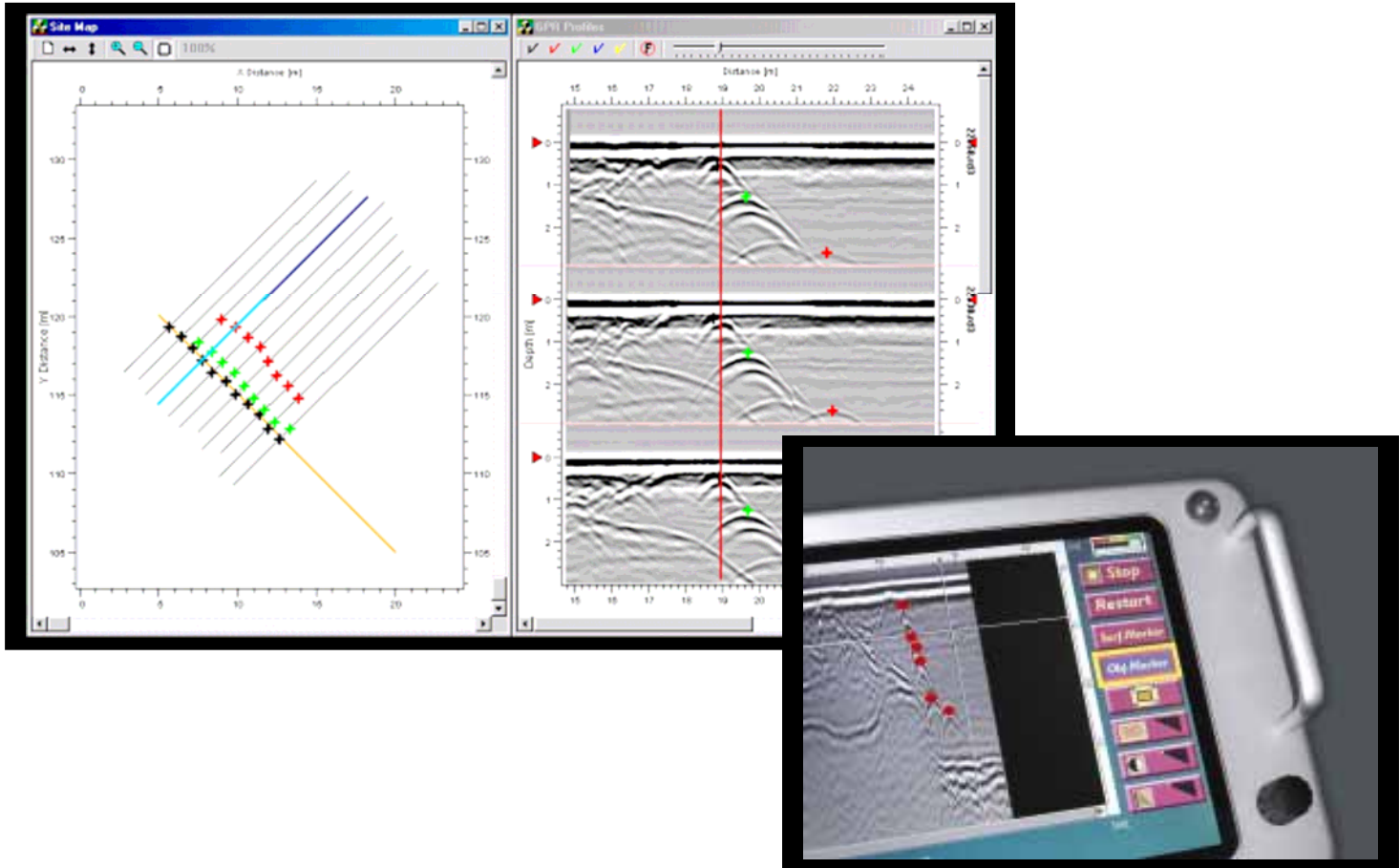


# OBJECT MAPPER™

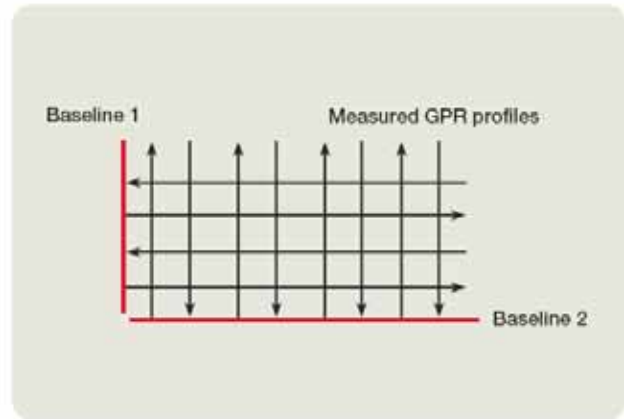
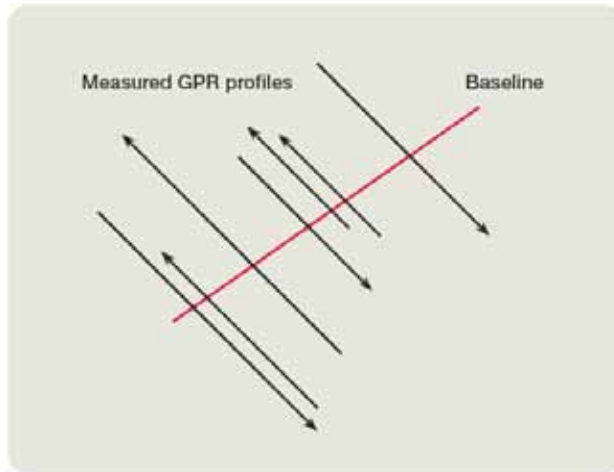


## Object Mapper™

Your easy visualization tool for identifying and displaying objects in a large set of GPR Profiles.

Picking GPR targets and generating a detailed map is as simple as clicking a mouse with Object Mapper. Windows based Object Mapper displays up to ten GPR profiles at once allowing the user to pick targets from multiple profiles with a mouse. The software eliminates the task of single profile interpretation which is time consuming and inefficient and thus very costly. Picks are automatically posted and visualized on a user defined grid or coordinate system to generate a map in real time. Objects that are linked versus isolated targets are readily identified.

Built in data collection management the XV11 Monitor allows for the marking of a user-defined baseline at any point in your profiles. This even applies to non-parallel profiles. No longer are trees, parked vehicles, or other obstacles a hindrance to your grid system. Profiles uploaded from the XV11 into Object Mapper are automatically adjusted to the baseline and thus perfectly aligned for profile to profile target picking



The user can customize the markers to distinguish between different types of utilities, geologic or archaeological features, or any other feature of interest in the GPR data set. Object Mapper can process two data sets from different directions for maximum interpretation ability.

The software includes a range of filtering capabilities including time gain, band pass, background removal, and more. Selected filters are applied simultaneously to an unlimited number of profiles. Vertical and horizontal scrolling is synchronized from all profiles greatly speeding interpretation.

Maps generated from Object Mapper are easily exported to your favorite CAD, GIS, or other mapping and planning software as a .dxf file. Markers may also be exported in ASCII format with both position and depth information for use in other application software.

### The ObjectMapper concept gives you the following main features:

- Simultaneous filtering and interpretation of an almost unlimited number of profiles
- Instant overview of the marked objects or features on a map view.
- Simultaneous viewing of up to 10 profiles at once.
- Text comments on individual markers.
- Selective hide and show of different marker types, for easier interpretation.
- Import of several baselines, as well as all the radar data.
- Baseline start and end points are freely adjustable.
- Easy export of the resulting map to your favorite CAD or GIS as .dxf files. Markers may also be exported in ASCII format with both position and depth information
- Printout of interpreted results, map view or radar data.
- Filtering capabilities with time gain, band pass, background removal, and much more.
- Possibilities to customize the markers to distinguish between different types of utilities, geologic or archaeological features
- Semi-automatic positioning of individual radar profiles along a baseline.

### System requirements

- W 95, 98, 2000, NT, XP
- 300MHz Pentium II processor
- 128MB of RAM
- 30 MB free hard disk space