

GPR for Pavement Evaluation



The ProEx Platform allows the user to utilize multiple antennas (expandable up to eight), with varying frequencies, all at the same time and at highway speeds. Antenna frequencies range from 250 MHz to 2.3 GHz adding the possibility for deeper geotechnical applications as well.

This platform is also completely compatible with GPS positioning. The typical setup for the ProEx RoadCart system is a two-antenna setup and that includes a 2.3 GHz antenna for pavement evaluations and an 800 MHz antenna for relatively deeper base and sub-base thicknesses. This system is also adaptable to almost any vehicle in your fleet.

RoadCart

Introducing the ProEx RoadCart System; a breakthrough in GPR technology for evaluating pavement, base and sub-base thicknesses.

This system is an extremely portable and cost-effective ground-coupled platform that provides the unique opportunity to collect information unobtainable with other systems. In the past, the systems available utilized bulky and expensive horn antenna systems requiring a dedicated vehicle and a significant amount of expertise to operate the system. These systems proved to be cost prohibitive for many budgets, particularly from a cost/benefit evaluation standpoint



Adjustable Coupling



Adjustable Survey Height



Foldable Fiberglass Beam



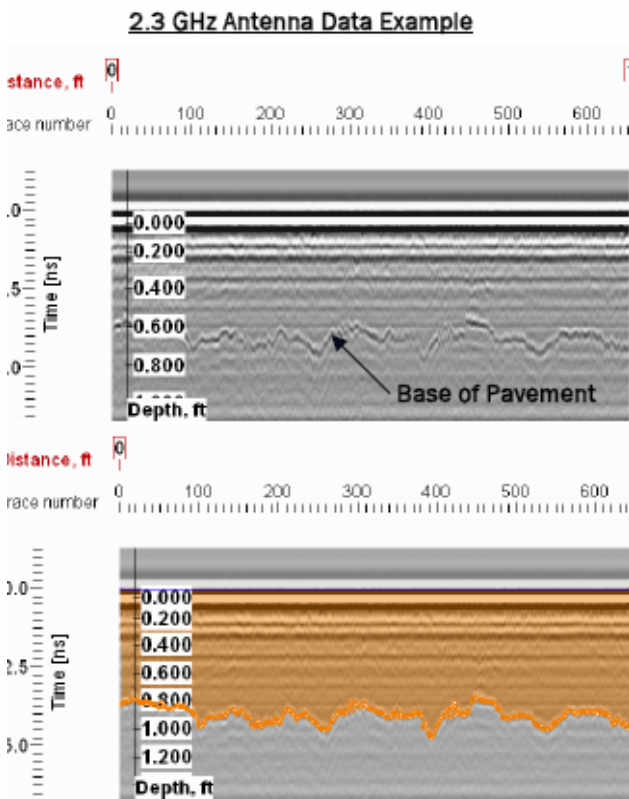
Shock Absorbent Hinge

RadExplorer Processing Software

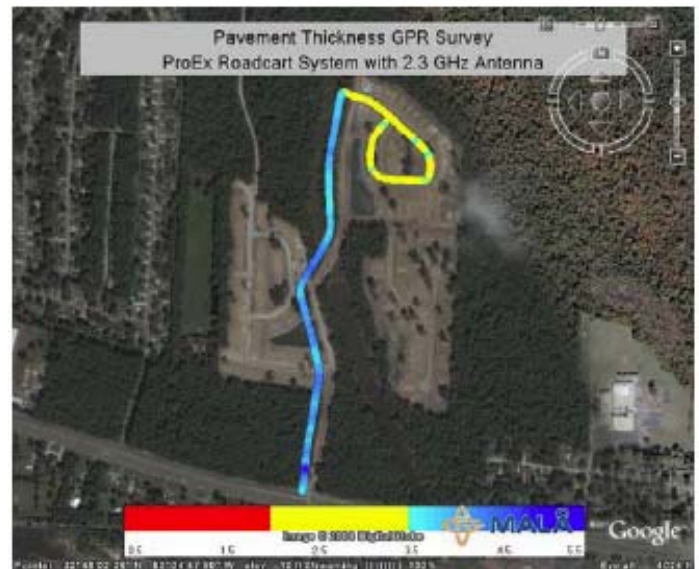
The RadExplorer GPR interactive software is a powerful, easy-to-learn tool that provides impressive data processing capabilities in a user-friendly package that provides extensive functionality such as manual or semi-automatic layer picking, time to depth conversion using a velocity model and display of the interpretation results.

GPS Mapper

The GPS Mapper software package is a tool for merging interpretations out of RadExplorer with GPS coordinates, and visualizes the interpretations in Google Earth.



Layer Picking, Modeling and Data Export



The layer picking tool allows the user to create and model the thickness and depth of the base of pavement and sub grade.

Once a layer has been created, that thickness information can be exported out, along with the GPS coordinate data, for use with our GPS Mapper software or some other GIS program

In short, the program allows you to:

- Display measured radar profiles locations – from anywhere on the Globe - in Google Earth.
- Display radar interpretations (layer thickness, depth to interface, etc) in Google Earth.
- Avoid struggling with coordinate conversion between different coordinate systems.
- If needed, use your own maps (as overlays in Google Earth) for presenting your results.