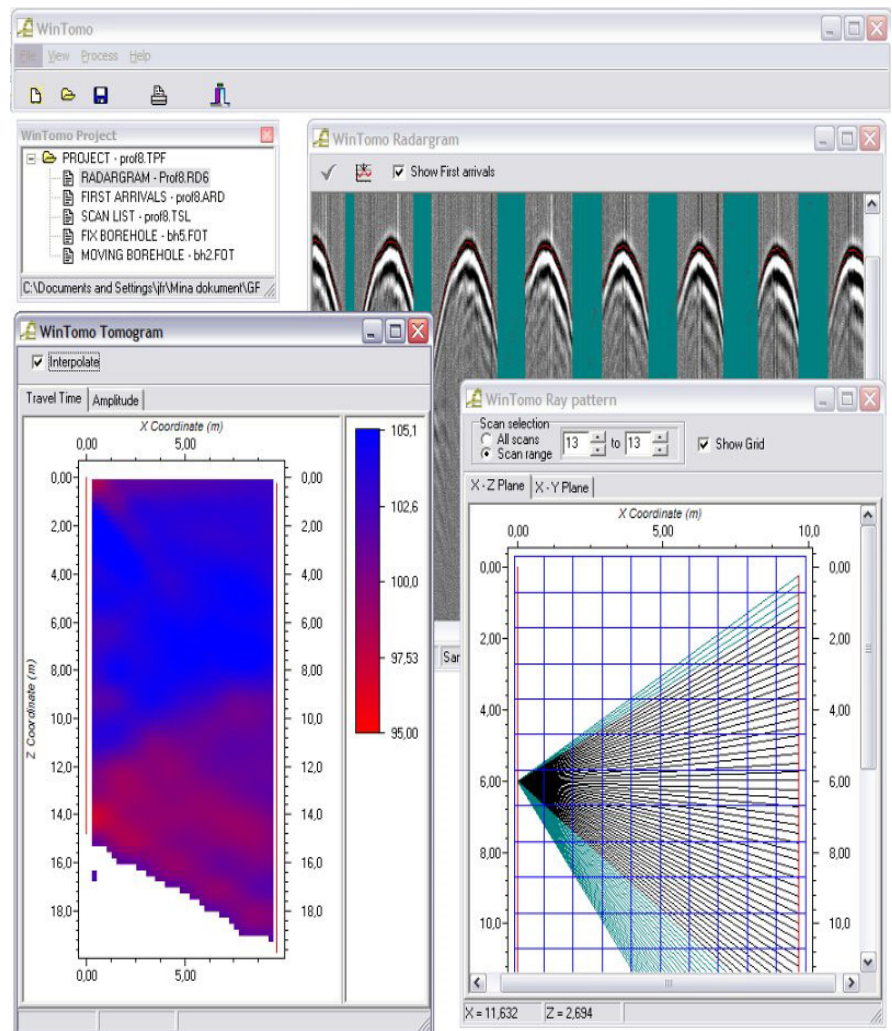


# WinTomo™ Borehole Radar Tomography Program

WinTomo is a tomographic processing software developed for Borehole GPR data. The program runs under WIN95/98.

The software imports the Ramac GPR/BH data measured in cross-hole configuration. Radar data and information on borehole positions for the respective antennas are created through the data collection software GPR.EXE that is delivered together with the GPR-system. This enables a quick start of the processing sequence making the presentation of result after the fieldwork a rapid process. This new version of the software is developed especially for the new growing engineering market that utilizes shallow radar tomography as a tool for rapid site investigations.

The image shows a number of the windows used during processing. You can select to have only the active window open or multi-windows. WinTomo tomographic inversion generally follows a fairly fixed processing sequence. The following gives an example. Some steps may be interchanged.



Create a new project, load radar data, apply band pass filter, if necessary, load or create a scan list, load or create borehole coordinate definitions, find first arrivals, remove bad traces, adjust first arrivals, adjust background parameters, set grid parameters, set inversion parameters, perform inversion, interpret tomogram.

## System requirements

- Windows 95, 98, 2000 or NT
- 100MHz Pentium processor
- 32MB of RAM
- 30MB free hard disk space
- 800x600 screen resolution
- ECP parallel port (IEEE1284) for optimal data acquisition performance