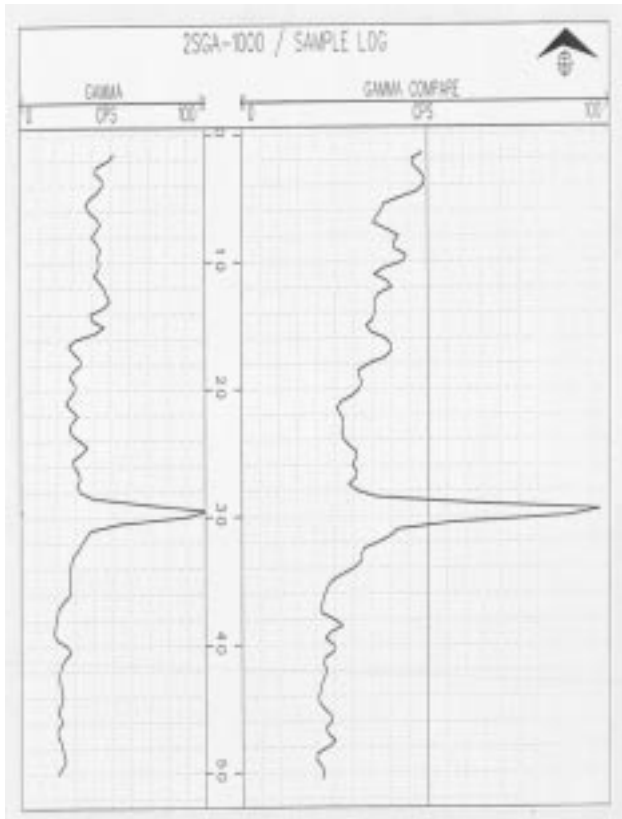


BOREHOLE PROBES



2SGA-1000
Ultra-Slim
Gamma Tool



PMT Type R7400.

Alpha Spectra 76 mm x 13 mm diameter.
NaI scintillation crystal.

The new 2SGA-1000 ultra-thin natural gamma sonde is designed for shallow soil investigations. The tool can be operated from MGX or MGX II Loggers and a custom small diameter cablehead. With an outside diameter of only 18.3 mm (0.720 inches) and high-resolution scintillation detector, the tool can be run through CPT casing to map lithology horizons.

- Diameter:** 18.28 mm (0.720 in.)
- Length:** 52.3 cm (20.6 in.)
- Weight:** 10 oz. (285 gm)
- Power:** 30 VDC @ 70mA